

For healthcare professional use only.

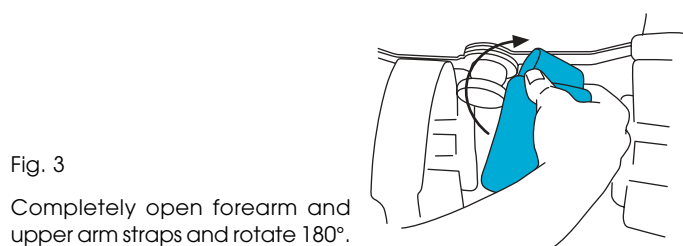
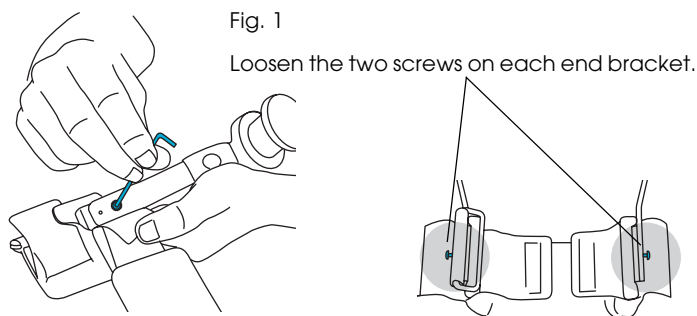
Mayo Clinic Elbow Brace Adjustment Instruction

AIRCAST
INCORPORATED

Adjust position of control knob

(The Mayo Clinic Elbow Brace is preset for application on the right arm or left arm with the control knob on the medial side. However, the control knob location may be adjusted to be on the lateral side depending on the patient's preference.)

- Open the cloth cover on the medial and lateral sides of each end bracket.
- Using an allen wrench (included with brace), loosen the two screws on the medial and lateral uprights of each end bracket (Fig. 1).
- Rotate each end bracket 180° (Fig. 2).
- Retighten both screws on each bracket.
- Replace the cloth cover on each bracket making sure that the fabric completely covers the metal surfaces.
- Completely open the forearm and upper arm straps and slide each strap out of the slot on the bracket so that it hangs freely. Be sure to open both the top portion of the straps as well as the bottom (the straps are two-sided).
- One at a time, firmly hold each strap near the rivet and rotate it 180° (Fig. 3). Reinsert each strap into the slot.



AIRCAST
INCORPORATED

P.O. Box 709
Summit, NJ/USA 07902-0709
(908) 273-6349
(800) 526-8785
www.aircast.com

For healthcare professional use only.

Mayo Clinic Elbow Brace Adjustment Instruction

AIRCAST
INCORPORATED

Adjust brace size

(The Mayo Clinic Elbow Brace is preset to the extra large size, suitable for most patients. However, the brace may be adjusted to accommodate sizes ranging from extra large to extra small)

- Open straps and cloth cover on each end bracket until the bracket screw is exposed.
- Using an allen wrench (included with brace), loosen the screw on each bracket (Fig. 1).
- Carefully lift the top portion of the bracket and reposition the silver pins into the desired holes marked by the numbers 1 – 5 (Fig. 2). The pins must be inserted into the same numbered holes on both brackets to ensure that the brace will work properly.
- Retighten screws on each bracket.
- If necessary, trim the gray foam padding so that it does not extend beyond the bracket (Fig. 3).
- Replace the cloth cover on each bracket making sure that the fabric completely covers the metal surfaces.

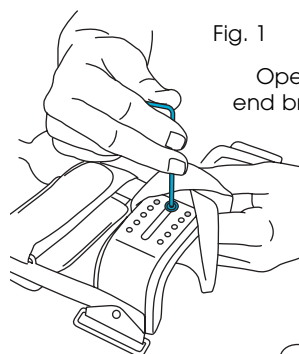


Fig. 1

Open cloth cover on each end bracket and loosen screw.

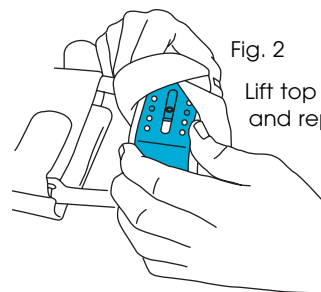


Fig. 2

Lift top portion of bracket and reposition silver pins.

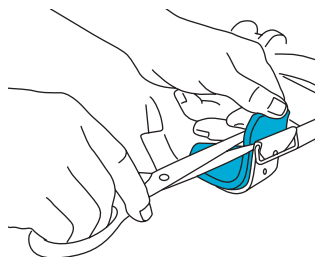


Fig. 3

Trim gray padding if it extends beyond the bracket.

AIRCAST
INCORPORATED

P.O. Box 709
Summit, NJ/USA 07902-0709
(908) 273-6349
(800) 526-8785
www.aircast.com